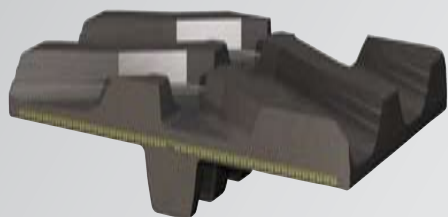


# SOLIDEAL®

## High Traction

## RUBBER TRACKS



## AG TRACKS

### Tiger

### STRENGTH

- Strong steel cables wound symmetrically for a true guide on the undercarriage
- Molded in guiding lugs and tread bars for maximum break off resistance

### TRACTION

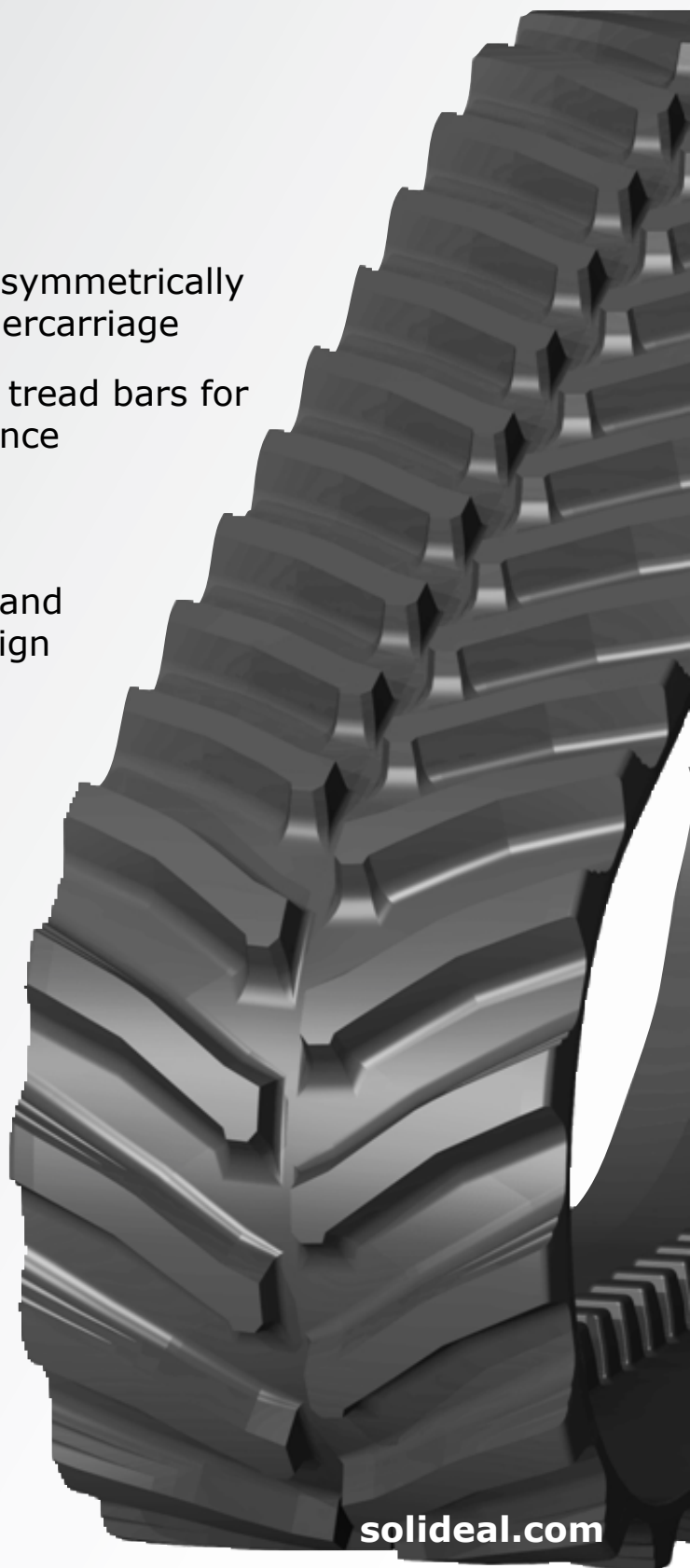
- 9" wide molded tread lugs and double angle tread bar design
- Excellent soil penetration
- Fuel economy and higher machine output

### DURABILITY

- Heavy duty carcass for longer life and increased durability

### SELF CLEANING TREAD

- Hauler step unique design



[solideal.com](http://solideal.com)



SOLIDEAL®

# SOLIDEAL®

## High Traction

## RUBBER TRACKS



SIZE	Profile			Type	Guiding			Carcass		Plies	
	Width	Pitch	Depth		Pitch	O.G.T.	O.G.B.	G.H.	Middle		Side
<b>John Deere T8000-series</b>					Guiding GE 4,5" - Track Length 324"						
25"x36x9" Tiger (GE 4,5")	25"	9"	2,5" --> 3"	GE	4,5"	4,0"	5,9"	3,5"	1,5"	1,25"	5
30"x36x9" Tiger (GE 4,5")	30"	9"	2,5" --> 3"	GE	4,5"	4,0"	5,9"	3,5"	1,5"	1,25"	5
<b>John Deere T9000-series</b>					Guiding GQ 4,5" - Track Length 378"						
30"x42x9" Tiger (GQ 4,5")	30"	9"	2,5" --> 3"	GQ	4,5"	5,0"	7,3"	4,2"	1,5"	1,25"	5
36"x42x9" Tiger (GQ 4,5")	36"	9"	2,5" --> 3"	GQ	4,5"	5,0"	7,3"	4,2"	1,5"	1,25"	5
<b>CAT/Claas 35/45/55</b>					Guiding GF 4,5" - Track Length 315"						
25"x35x9" Tiger (GF 4,5")	25"	9"	2,5" --> 3"	GF	4,5"	3,3"	4,7"	4,0"	1,5"	1,25"	5
30"x35x9" Tiger (GF 4,5")	30"	9"	2,5" --> 3"	GF	4,5"	3,3"	4,7"	4,0"	1,5"	1,25"	5
<b>CAT/Claas 65/70/75/85/95</b>					Guiding GR 4,5" - Track Length 342"						
25"x38x9" Tiger (GR 4,5")	25"	9"	2,5" --> 3"	GR	4,5"	1,5"	4,0"	4,9"	1,5"	1,25"	5
30"x38x9" Tiger (GR 4,5")	30"	9"	2,5" --> 3"	GR	4,5"	1,5"	4,0"	4,9"	1,5"	1,25"	5
36"x38x9" Tiger (GR 4,5")	36"	9"	2,5" --> 3"	GR	4,5"	1,5"	4,0"	4,9"	1,5"	1,25"	5
<b>AGCO/CAT Challenger MT700-series</b>					Guiding GS 4,5" - Track Length 369"						
25"x41x9" Tiger (GS 4,5")*	25"	9"	2,5" --> 3"	GS	4,5"	3"	5"	4,7"	1,5"	1,25"	5
30"x41x9" Tiger (GS 4,5")*	30"	9"	2,5" --> 3"	GS	4,5"	3"	5"	4,7"	1,5"	1,25"	5
<b>AGCO/CAT Challenger MT800-series</b>					Guiding GT 4,5" - Track Length 396"						
25"x44x9" Tiger (GT 4,5")*	25"	9"	2,5" --> 3"	GT	4,5"	4"	6"	5"	1,5"	1,25"	5
30"x44x9" Tiger (GT 4,5")*	30"	9"	2,5" --> 3"	GT	4,5"	4"	6"	5"	1,5"	1,25"	5
36"x44x9" Tiger (GT 4,5")*	36"	9"	2,5" --> 3"	GT	4,5"	4"	6"	5"	1,5"	1,25"	5

\* Coming soon

### Guiding geometry



O.G.T. Outer Guide Top (width)  
 O.G.B. Outer Guide Bottom (width)  
 G.H. Guiding Height

**BUILT STRONG TO HELP YOU GET THE JOB DONE!**

For more details, contact your Solideal dealer or visit [solideal.com](http://solideal.com)

Distributed by:

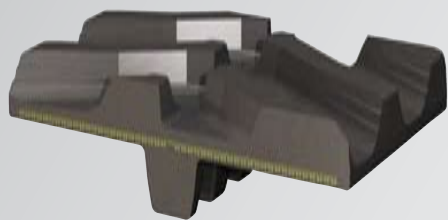


**SOLIDEAL®**

# SOLIDEAL®

## High Mileage

## RUBBER TRACKS



## AG TRACKS

### Leopard

### STRENGTH

- Strong steel cables wound symmetrically for a true guide on the undercarriage
- Molded in guiding lugs and tread bars for maximum break off resistance

### FLOATATION & TRACTION

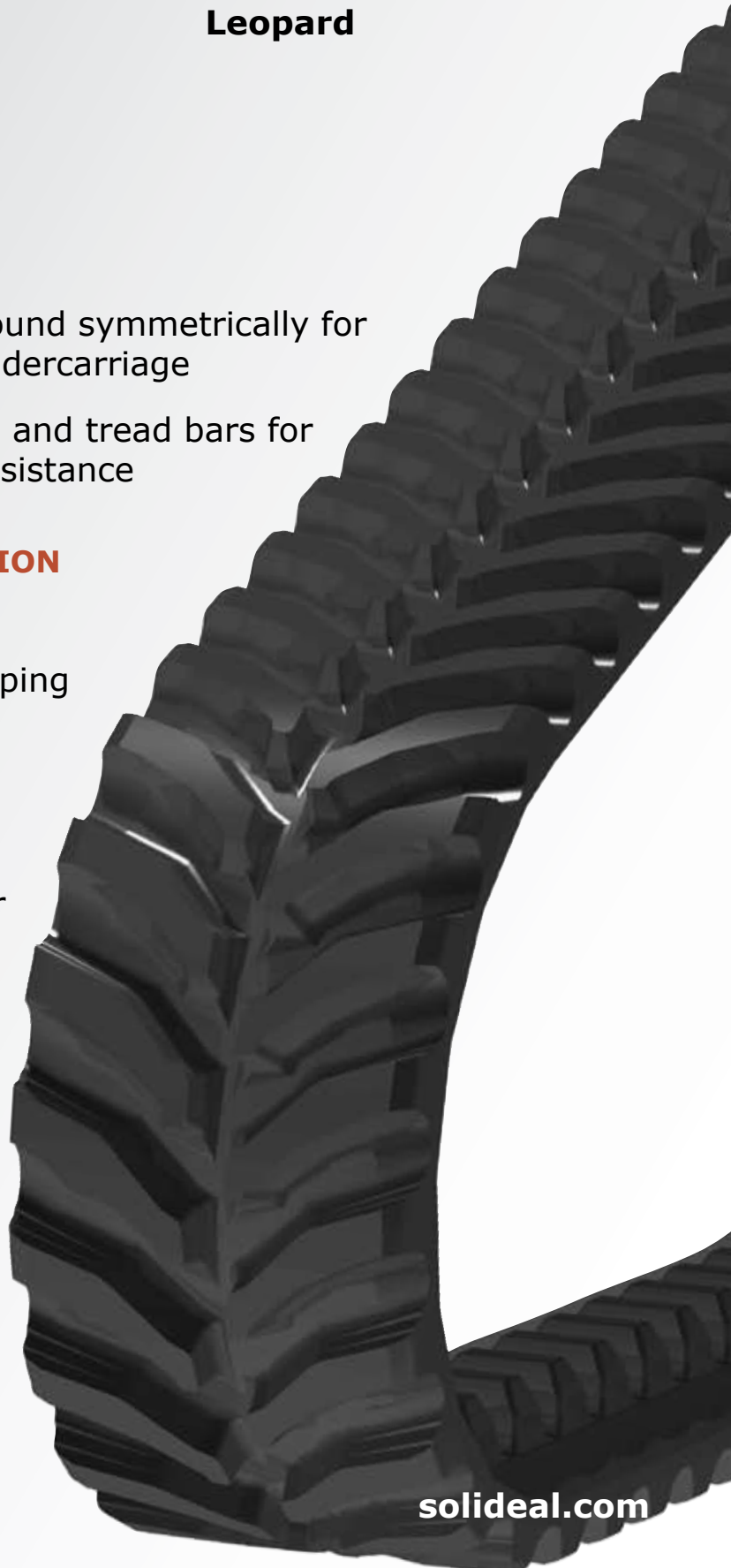
- 3" deep tread lugs
- Designed for row-cropping and general tillage applications

### COMFORT

- Triple angled tread bar
- 33% positive contact area
- Excellent when travelling on the road between jobs

### SELF CLEANING TREAD

- Hauler step unique design



[solideal.com](http://solideal.com)



SOLIDEAL®

# SOLIDEAL®

## High Mileage

## RUBBER TRACKS



SIZE	Profile			Guiding				Carcass		Plies	
	Width	Pitch	Depth	Type	Pitch	O.G.T.	O.G.B.	G.H.	Middle		Side
<b>John Deere T8000-series</b>				Guiding GE 6" - Track Length 324"							
16"x54x6" Leopard (GE 6")	16"	6"	2,25" -->2,5"	GE	6"	4,0"	5,9"	3,5"	1,25"	1"	4
18"x54x6" Leopard (GE 6")	18"	6"	2,25" -->2,5"	GE	6"	4,0"	5,9"	3,5"	1,25"	1"	4
24"x54x6" Leopard (GE 6")	24"	6"	2,25" -->2,5"	GE	6"	4,0"	5,9"	3,5"	1,25"	1"	4
30"x54x6" Leopard (GE 6")	30"	6"	2,25" -->2,5"	GE	6"	4,0"	5,9"	3,5"	1,25"	1"	4
<b>John Deere T9000-series</b>				Guiding GQ 6" - Track Length 378"							
30"x63x6" Leopard (GQ 6")	30"	6"	2,25" -->2,5"	GQ	6"	5,0"	7,3"	4,2"	1,25"	1"	4
36"x63x6" Leopard (GQ 6")	36"	6"	2,25" -->2,5"	GQ	6"	5,0"	7,3"	4,2"	1,25"	1"	4
<b>CAT/Claas 35/45/55</b>				Guiding GF 6" - Track Length 318"							
16"x53x6" Leopard (GF 6")	16"	6"	2,25" -->2,5"	GF	6"	3,3"	4,7"	4,0"	1,25"	1"	4
18"x53x6" Leopard (GF 6")	18"	6"	2,25" -->2,5"	GF	6"	3,3"	4,7"	4,0"	1,25"	1"	4
24"x53x6" Leopard (GF 6")	24"	6"	2,25" -->2,5"	GF	6"	3,3"	4,7"	4,0"	1,25"	1"	4
30"x53x6" Leopard (GF 6")	30"	6"	2,25" -->2,5"	GF	6"	3,3"	4,7"	4,0"	1,25"	1"	4
<b>CAT/Claas 65/70/75/85/95</b>				Guiding GR 6" - Track Length 342"							
24"x57x6" Leopard (GR 6")	24"	6"	2,25" -->2,5"	GR	6"	1,5"	4,0"	4,9"	1,25"	1"	4
30"x57x6" Leopard (GR 6")	30"	6"	2,25" -->2,5"	GR	6"	1,5"	4,0"	4,9"	1,25"	1"	4
36"x57x6" Leopard (GR 6")	36"	6"	2,25" -->2,5"	GR	6"	1,5"	4,0"	4,9"	1,25"	1"	4
<b>AGCO/CAT Challenger MT700-series</b>				Guiding GS 6" - Track Length 372"							
16"x62x6" Leopard (GS 6") *	16"	6"	2,25" -->2,5"	GS	6"	3"	5"	4,7"	1,25"	1"	4
18"x62x6" Leopard (GS 6") *	18"	6"	2,25" -->2,5"	GS	6"	3"	5"	4,7"	1,25"	1"	4
24"x62x6" Leopard (GS 6") *	24"	6"	2,25" -->2,5"	GS	6"	3"	5"	4,7"	1,25"	1"	4
30"x62x6" Leopard (GS 6") *	30"	6"	2,25" -->2,5"	GS	6"	3"	5"	4,7"	1,25"	1"	4
<b>AGCO/CAT Challenger MT800-series</b>				Guiding GT 6" - Track Length 396"							
24"x66x6" Leopard (GT 6") *	24"	6"	2,25" -->2,5"	GT	6"	4"	6"	5"	1,25"	1"	4
30"x66x6" Leopard (GT 6") *	30"	6"	2,25" -->2,5"	GT	6"	4"	6"	5"	1,25"	1"	4
36"x66x6" Leopard (GT 6") *	36"	6"	2,25" -->2,5"	GT	6"	4"	6"	5"	1,25"	1"	4

\* Coming Soon

**BUILT STRONG TO HELP YOU GET THE JOB DONE!**

For more details, contact your Solideal dealer or visit [solideal.com](http://solideal.com)

Distributed by:



**SOLIDEAL®**

# SOLIDEAL®

## Mid Rollers

## RUBBER TRACKS

### New in 2007!

### AG TRACK Mid Rollers

#### PREMIUM QUALITY

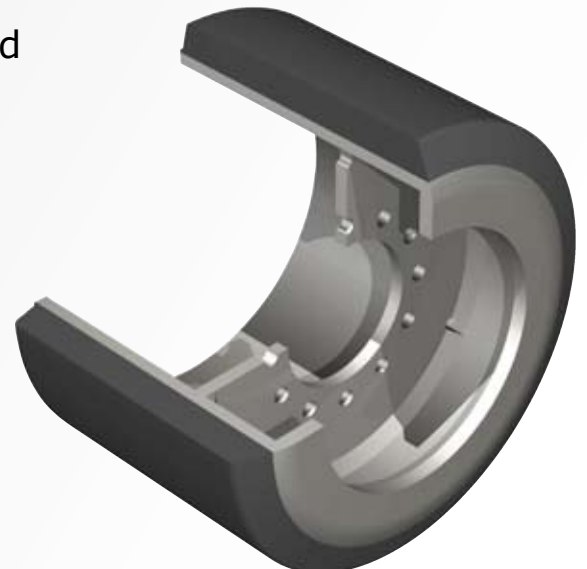
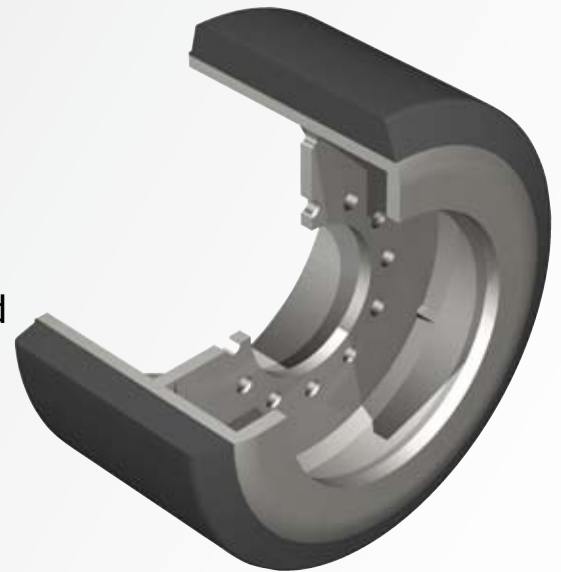
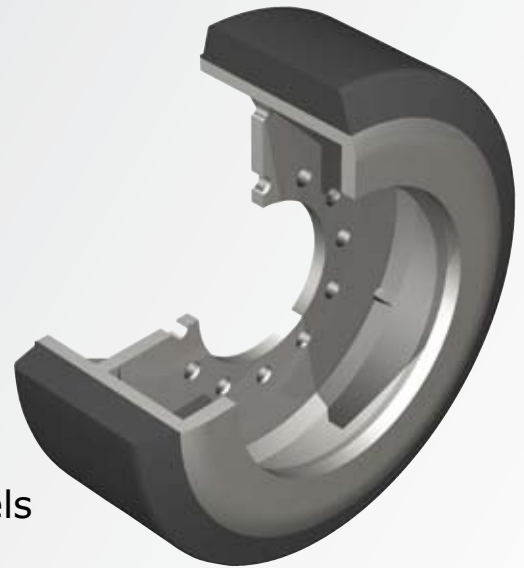
- Technology based on Solideal's expertise in industrial tires and wheels
- High steel grade and best natural rubber compounds
- Available in three different widths

#### DURABILITY

- Maximum resistance to tearing and chunking
- Even and smooth wear

#### OPTIMIZE MACHINE PERFORMANCE

- Essential components of the undercarriage, using premium mid rollers will increase track life and machine performance



SOLIDEAL®

[solideal.com](http://solideal.com)

# SOLIDEAL®

## Mid Rollers

## RUBBER TRACKS



SIZE	Geometry		Recommended Track Width		Weight	
	OD	Width	Minimum	Maximum	lbs	kg
<b>John Deere T8000-series (12/tractor)</b>						
14.6x4.5(12 1/2).(000)	14,6"	4,5"	16"	18"	33	15
14.6x8(12 1/2).(000)	14,6"	8"	24"	30"	60	27
14.6x9(12 1/2).(000)	14,6"	9"	25"	30"	66	30
<b>John Deere T9000-series (16/tractor)</b>						
14.6x8(12 1/2).(001)	14,6"	8"	30"	30"	60	27
14.6x10(12 1/2).(001)	14,6"	10"	36"	36"	75	34
<b>CAT/Claas 35/45/55 (12/tractor)</b>						
14x5.5(11 3/4).(000)	14"	5,5"	16"	18"	45	20
14x8.5(11 3/4).(000)	14"	8,5"	24"	30"	66	30
14x10(11 3/4).(000)	14"	10"	25"	30"	78	35
<b>CAT/Claas 65/70/75/85/95 (16/tractor)</b>						
15x9.5(342).(003)	15"	9,5"	24"	36"	74	34
<b>AGCO/CAT Challenger MT700-series (12/tractor)</b>						
14x5.5(11 3/4).(002)	14"	5,5"	16"	24"	45	20
14x8.5(11 3/4).(002)	14"	8,5"	24"	30"	66	30
14x10(11 3/4).(002)	14"	10"	25"	30"	78	35
<b>AGCO/CAT Challenger MT800-series (16/tractor)</b>						
14x5.5(11 3/4).(002)	14"	5,5"	16"	24"	45	20
14x8.5(11 3/4).(002)	14"	8,5"	24"	30"	66	30
14x10(11 3/4).(002)	14"	10"	30"	36"	78	35
<b>CAT Lexion Harvester - Claas CIT Units (4/unit)</b>						
14x8.5(11 3/4).(001)	14"	8,5"	24"	30"	67	30
14x10(11 3/4).(001)	14"	10"	30"	36"	78	36

Mid rollers are often the most overlooked part of any undercarriage. It is however a critical part for your machine as it supports the full weight of the tractor. Replacing worn out mid rollers with Solideal parts will increase the life of your ag-tracks and preserve your machine's undercarriage.

### BEST COMPONENTS FOR BEST PERFORMANCE!

For more details, contact your Solideal dealer or visit [solideal.com](http://solideal.com)



Distributed by:



**SOLIDEAL®**